



PULSE

August 28, 2015
VOL. 26 NO. 8

NEWS OF INTEREST TO RPMH EMPLOYEES

EMPLOYEE OF THE MONTH



Congratulations to Mary Segura, our August Employee of the Month. Mary began working at ROMH as a Physical Therapy Aide on February 1, 2010. She continues to serve in Rehab but, in 2014 took on additional responsibilities in the new Wellness Center as an Exercise Leader and Personal Trainer. Mary was nominated by a co-worker that called her a "great role model for health". They went on to say that Mary "works hard to make sure each class member is comfortable and makes the classes enjoyable". Mary was a 1981 graduate of Roscoe High School. She and her husband, Joe, have made their home in Sweetwater. Congratulations to Mary on a much-deserved honor!

SPECIAL DAYS



September 4- Sweetwater Homecoming
September 7- Labor Day
September 14-18- EVS Week
September 29 & 30- Cafeteria Plan Enrollment
October 1- Cafeteria Plan Enrollment
October 2- Scrub Show ER Classroom
September 14-21 Safety Beta Storm

NEW EMPLOYEES



WELCOME!!!

Dietary

Amber Mulanax-Cook

Nursing

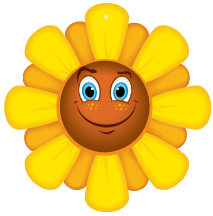
Kerri Helm, RN-ER/ICU

Physical Therapy

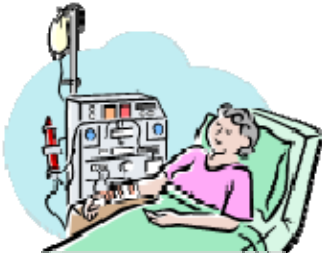
Nic Joy, PTA-Rehabilitation

**WE'VE
MOVED**

SPECIAL MENTIONS



**PATIENT OPINION
POLL**



HIPAA FAQ



Voluntarily Yours Gift Shop

The Voluntarily Yours Gift Shop has moved temporarily to the Hospital Classroom 1 located next to Admissions. Come by and see what they have done!

Casey Crain
Dr. Dennis
Erica Munoz
Rachel Sharp

Danyel Culwell
Dr. Jones
Georgie Porter
Wendy Davis

Dr. Bueso
Dr. Patterson
Jacqueline Brasuell

"Thank you all for taking such great care of me. The entire hospital's nurses and staff are great and I appreciate the care I received."

"David Richards and Dr. Bueso in the ER were great! Thanks for taking care of me and I love your hospital!"

"Dr. Patterson is very caring and explains everything very well. The ER staff are awesome! Georgie Porter is great at IV's! The Med Surg staff are all great! Thanks to Wendy Davis, RN for going well beyond in helping get an appointment set up for out of town hospital. She is always smiling and is very pleasant. RPMH is a great place. Sweetwater is very lucky to have such a great staff!"

"Danyel Culwell, mom's nurse, is the best I believe mom has ever had. She has such a caring presence, calm, sweet and takes care of mom quickly and efficiently. Mom has been here Friday, Saturday and Sunday and Danyel has been consistent, kind and caring the entire time. Wish we could take her home with us!"

WHAT HEALTH INFORMATION CAN WE GIVE TO A MEDICAL EXAMINER?

HIPPA allows a healthcare provider to disclose protected health information to a medical examiner or coroner. This can include information needed to identify a deceased person or determine cause of death. A subpoena may be provided, however, a written statement on official letterhead establishing identity and authority is sufficient. An oral confirmation from the medical examiner's office is also acceptable when a written statement is impractical in the circumstances.

HENRIETTA THE HIPAA HIPPO: The Little Things We Can Do to Protect PHI

HENRIETTA



THE HIPAA HIPPO



HIPAA requires us to always make reasonable efforts to protect our patients' information. Always follow the policies below to ensure patient privacy:

BULLETIN BOARDS may not contain any documents with PHI of patients, unless the patient has authorized the display in accordance with the AUTHORIZATION TO USE OR DISCLOSE PROTECTED HEALTH INFORMATION. - This includes:

Baby pictures (even without a name or other identifying information)
Cards and notes of appreciation

Computer Screens:

- a. Computer screens at each workstation must be positioned, when possible, so that only authorized users at that workstation can read the display.
- b. Computer displays will be configured to go blank, or to display a screen saver when left unattended for more than a brief period of time. The Privacy and Security Officials will determine the period of time. Wherever practicable, reverting from the screen saver to the display of data will require a password.
- c. Computer screens left unattended for longer periods of time will log off the user. The Security and Privacy Officials will determine the period of time.

Conversations

- a. Conversations concerning patients' claims or other PHI must be conducted in a way that reduces the likelihood of being overheard by others.
- b. Wherever reasonably possible, noise inhibitors may be used to reduce the opportunity for conversations to be overheard.
- c. Avoid discussion PHI in public areas such as the cafeteria, waiting rooms, smoking areas, etc.

Copying claims and other PHI

- a. When PHI is copied, only the information that is necessary to accomplish the purpose for which the copy is being made, may be copied. This may require that part of a page be masked. Extra copies made in error will be shredded.

Desks and countertops

- a. Claims and other medical record documents that contain PHI must be placed face down on counters, desks, and other public places where third parties can see them.

- b. Wherever it is reasonably possible to do so, claims and other documents containing PHI will not be left on desks and countertops after business hours or for extended periods of time unsupervised. Supervisors will take reasonable steps to provide all work areas where PHI is used in paper form with lockable storage bins, lockable desk drawers, or other means to secure PHI during periods when the area is left unattended.
- c. In areas where locked storage after hours cannot reasonably be accomplished, PHI must be kept out of sight.

Disposal of paper with PHI:

- a. Paper documents containing PHI must be put into a shredding container when no longer needed.



REMEMBER: Only YOU can protect patient information!

EDUCATION

PROFESSOR ED



Online Education: health.edu, growing up with us.com, txhealthsteps.com

RPMH Forms Education: Growing Up with Us Newsletter, Medication Safety Alert, Nurse Advise, and Lots of educational reading for all departments

Safety Storm BETA: Date- September 14th and 21th, Times: 0730, 1000, 1330, 1500 Place: E.R. Classroom 2

Remember to check bulletin boards and RPMH calendar for upcoming education!

Jewel Parker, R.N.
Staff Educator
Ext. 299

RPMH RAISES TO THE OCCASION!!!

RPMH HYGIENE FOR KIDS PROGRAM



HOME HEALTH DEPT.



MED/SURG



MED SURG



RADIOLOGY DEPT.



CARDIOPULMONARY DEPT.



MAINTENANCE DEPT.



NURSING ADMIN/HR/ADMIN



DELIVERY DAY!!!



**RPMH
HYGIENE FOR
KIDS
PROGRAM**



CARDIAC REHAB/WELLNESS CTR.



DIETARY DEPT.



LABORATORY DEPT.



BUSINESS OFFICE/ACCOUNTING



E.R. DEPT.



RPMH GANG!!!



H.I.M. DEPT.



EVS DEPT.

MANY THANKS TO ALL THAT HELPED IN MAKING THIS PROJECT SO SUCCESSFUL. WHAT A WAY TO HELP OUR CHILDREN START OFF THE SCHOOL YEAR!!!



SCHOOL DAYS!!!

RPMH welcomed Sweetwater, Roscoe, Highland, Blackwell, Daycares and Cornerstone school district teachers and staff with "Back to School" gift baskets filled with RPMH bottles of hand sanitizers, free passes to the Wellness Center, information sheets on immunizations and asthma in children. We wish all area schools a great year!



Sherma Barham and Emily Thurman



Sweetwater Middle School



Sweetwater High School



Cornerstone Christian School



Kids' Campus Daycare



Open Doors Daycare



Building Blocks Daycare



Blackwell School



Southeast Elementary



Eastridge Elementary



JP Cowen Early Childhood Center

RPMH Readers' Choice Award Winners!!!

Your Choice. Our Honor.
 2015 Readers' Choice Award Winners

On behalf of everyone at Rolling Plains Memorial Hospital, thank you for voting us as the best in seven categories.

 Primary Care Physician Dr. Jennifer Little	 Physical Therapist Michelle Matney, LPT	 Home Tasha Jeter	 Volunteer Edna Sowell	 Secretary Carly Howard	 Home Health Care RPMH Home Health	 Fitness Center RPMH Fitness Center
--	---	--	---	--	---	--